



PRINTERS WITH CONTROLLER BOARD  | 

CP324-M0-GCA

Options

- Near End Sensor

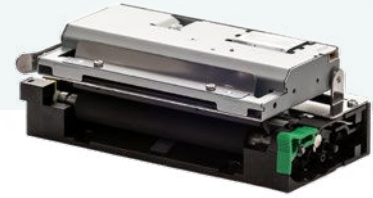
Features

- Compact, with back or front loading
- Powerful cutter : full and partial for paper thickness from 63 to 150 μm / 2 million cuts
- Anti-jamming detection with automatic blade retraction
- External pluggable switches and LED for easy integration
- Black mark & paper end detection for label printing
- Setup parameters saved in flash are recovered at next power-up

Applications

- Cash Registers
- EFT POS
- Fiscal Printers
- Gaming & Lottery
- Measuring Instruments and Analysers
- Medical Equipment
- Parking
- Ticketing
- Weighing Scales

Specifications	CP324-M0-GCA-BL	CP324-M0-GCA-FL
Print method	Thermal	Thermal
Number of dots	576	576
Resolution (dots/mm)	8	8
Max Printing speed (mm/s)	150	150
Print resolution (dpi)	200	200
Sensor	Black Mark, Paper End	Black Mark, Paper End
Cutter Home Position	Mechanical Switch	Mechanical Switch
Cutter Type	Full & Partial	Full & Partial
Media Type	Ticket, Label	Ticket, Label
Paper width (mm)	82,5 \pm 1	80 (standard) or 82,5 (wide) \pm 1
Printing width (mm)	72	72
Min. paper thickness (μm)	63	63
Max. paper thickness (μm)	150	150
Paper loading	Automatic or Manual	Automatic or Manual
Dimensions (WxDxH mm)	96 x 55 x 42	96 x 55 x 42
Weight (g)	140	140
Operating Voltage	24V	24V
Voltage range (Logic/Head)	From 18V to 27V	From 18V to 27V
Paper detection	Opto sensor	Opto sensor
Temperature detection	Thermistor	Thermistor



PRINTERS WITH CONTROLLER BOARD  3" |  24V

CP324-M0-GCA

Specifications	CP324-M0-GCA-BL	CP324-M0-GCA-FL
Head-up or Cover-open detection	Opto sensor	Opto sensor
Connector Type	USB-C, RS232, Serial UART	USB-C, RS232, Serial UART
Operating temperature	From -20° to 70°C	From -20° to 70°C
Storage temperature	From -40° to + 85°C	From -40° to + 85°C
Operating humidity	20% to 85% (no condensing)	20% to 85% (no condensing)
TPH	200 km / 100M pulses	200 km / 100M pulses
Cutter	2 million cuts	2 million cuts
Command System	APS / POS + on-demand	APS / POS + on-demand
Driver	Windows, Linux, Android + Utility Program + IPP USB (Driverless)	Windows, Linux, Android + Utility Program + IPP USB (Driverless)
SDK / Plug-in	Windows, Linux, Android	Windows, Linux, Android
Character Size (easy upgradable)	Font A : 12x24, Font B : 9x17	Font A : 12x24, Font B : 9x17
Barcode	UPC-A, UPC-E, EAN13, CODE39, ITF, CODABAR	UPC-A, UPC-E, EAN13, CODE39, ITF, CODABAR
Graphics	Supporting all user-defined fonts, graphics & logos	Supporting all user-defined fonts, graphics & logos
Certifications	ISO 9001:2015, ISO14001, ISO13485:2016 certified - RoHS compliant	ISO 9001:2015, ISO14001, ISO13485:2016 certified - RoHS compliant