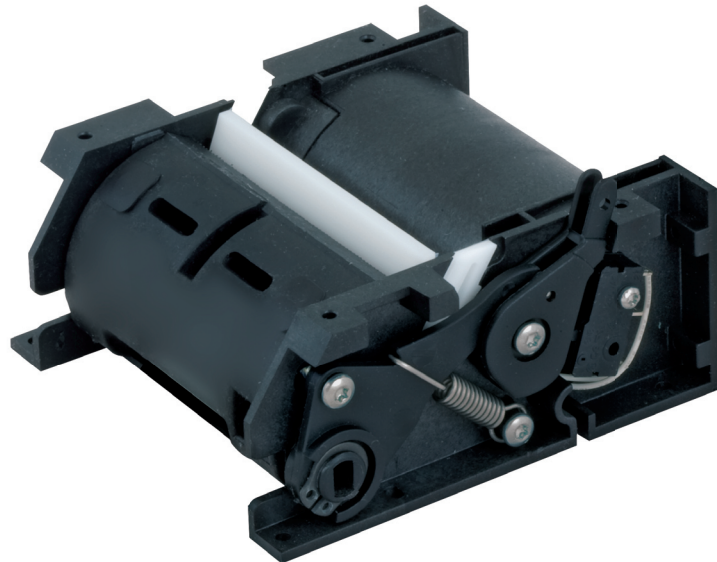


Paper



58 mm



RoHS

Specifications

FHP6248

Print method	Thermal
Number of dots	432
Resolution (dots/mm)	8
Printing width (mm)	54
Paper width (mm)	58
Max. paper thickness (μ)	150
Paper loading	Automatic
Printing speed (mm/s)	70
Paper detection	Opto sensor
Temperature detection	Thermistor
Head-up or Cover-open detection	Switch
Voltage range (Logic/Head)	5 ± 5% / 18-26.5
Dot resistance (Ohm)	1500 ± 3%
Energy per dot (mJ)	0.25
Stepper motor (Ohm)	Unipolar (110)
Weight (g)	200
Life/reliability	100km/100M pulses
Operating temperature (C°)	0 to 50 non cond.
Operating humidity (%)	20 to 85 non cond.
Dimensions (WxDxH mm)	87x90x40

Features

- 100% Compatible with a popular standard mechanism
- Long life and reliable (100 kms)
- Same footprint for all mechanisms in the series
- Easy low cost upgrade to higher resolution and print speed

Applications

- Cash registers
- Fiscal printers
- Gas (petrol) pumps
- Measuring instruments and analyzers
- POS (point of sale)
- Weighing machines, scales

Options

Chip set



Peel off system

