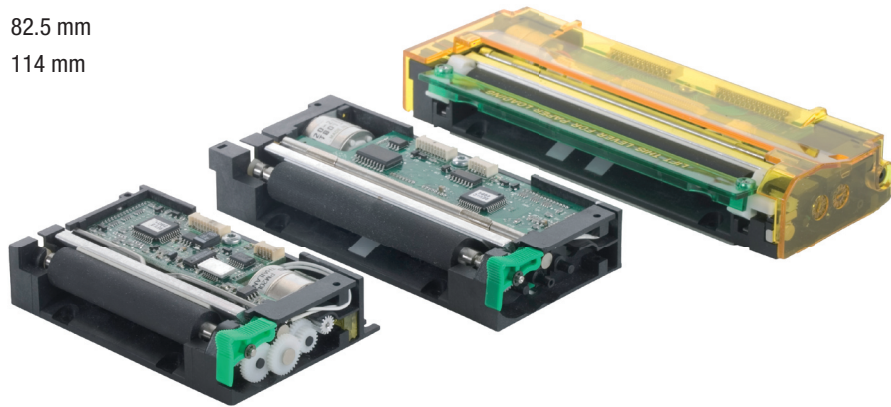


Paper



60 mm
66 mm
80 mm
82.5 mm
114 mm



Inches

- 2, 3 and 4 inches paper width
- Compact and light
- Print speed up to 120 mm/s
- Print text graphics and barcode
- Downloadable character set
- Customizable I²C, I/O extension boards, handles Near End of Paper and keyboard control extension
- Software programmable energy consumption
- Hole / Mark detection
- Windows, Linux drivers
- No power-up sequence required
- Front/Bottom loading version

Applications

- Portable printers and terminals
- EFTs
- Vending machines

Specifications	CP290-HRS	CP324-HRS	CP424-HRS
Printing method	Thermal	Thermal	Thermal
Number of dots	432	576	864
Resolution (dots/mm)	8	8	8
Printing width (mm)	54	72	108
Paper width (mm)	60 / 66 ± 0.5	80 / 82.5	114
Max. paper thickness (μ)	80	80	80
Paper loading	Automatic	Automatic	Automatic
Printing speed	Up to 120	Up to 120	Up to 120
Paper detection	Opto sensor	Opto sensor	Opto sensor
Temperature detection	Thermistor	Thermistor	Thermistor
Head-up or Cover-open detection	Switch	Switch	Switch
Voltage range (Head)	18-27	18-27	18-27
Weight (g)	70	80	150
Life/reliability	50km/100M pulses	50km/100M pulses	50km/100M pulses
Operating temperature (C°)	-20 to 70 non cond.	-20 to 70 non cond.	-20 to 70 non cond.
Operating humidity (%)	20 to 85 non cond.	20 to 85 non cond.	20 to 85 non cond.
Dimensions (WxDxH mm)	91x55x20	120x55x20	156x63x27
Peak head consumption (A)	1 to 8 programmable	1 to 10.5 programmable	1 to 15 programmable
Character set	3 resident + downloadable	3 resident + downloadable	3 resident + downloadable
Character size	8x16, 7x16, 12x20	8x16, 7x16, 12x20	8x16, 7x16, 12x20
Characters per line (max.)	48, 24, 12/54, 27, 13/32, 16, 8	64, 32, 16/72, 36, 18/44, 22, 11	96, 48, 24/108, 54, 27/66, 33, 16
Interfaces	RS232C, USB	RS232C, USB	RS232C, USB
Graphics	3 modes	3 modes	3 modes
Barcodes	UPC A-E, EAN 13-8, Code 39, ITF 2/5, Codabar, Code 128 A-B-C		
Drivers	Windows - Linux	Windows - Linux	Windows - Linux
Label/Black mark detection	Y	Y	Y
Zero power mode (sleep mode)	N	N	N
Auto wake-up on received data	N	N	N
Functional keyboard	Y	Y	Y

Options

Guillotine cutter

