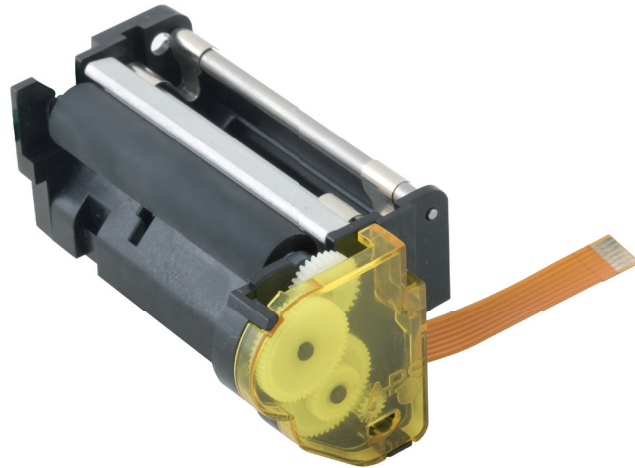


## Paper



60 mm

63 mm



| Specifications | ELM2071 | ELM2241 | ELM2261 | ELM2301 |
|----------------|---------|---------|---------|---------|
|----------------|---------|---------|---------|---------|

|                                 |                           |                           |                           |                           |
|---------------------------------|---------------------------|---------------------------|---------------------------|---------------------------|
| Print method                    | Thermal                   | Thermal                   | Thermal                   | Thermal                   |
| Number of dots                  | 384                       | 432                       | 448                       | 640                       |
| Resolution (dots/mm)            | 8                         | 8                         | 8                         | 12                        |
| Printing width (mm)             | 48                        | 54                        | 56                        | 54                        |
| Paper width (mm)                | 60 or 63                  | 60 or 63                  | 60 or 63                  | 60 or 63                  |
| Max. paper thickness (μ)        | 80                        | 80                        | 80                        | 80                        |
| Paper loading                   | Easy loading              | Easy loading              | Easy loading              | Easy loading              |
| Printing speed (mm/s)           | 80                        | 80                        | 150                       | 100                       |
| Paper detection                 | Opto sensor               | Opto sensor               | Opto sensor               | Opto sensor               |
| Temperature detection           | Thermistor                | Thermistor                | Thermistor                | Thermistor                |
| Head-up or Cover-open detection | Combined with opto sensor | Combined with opto sensor | Combined with opto sensor | Combined with opto sensor |
| Voltage range (Logic/Head)      | 2.7-5.25 / 4.5÷8.5        | 4.75-5.25 / 18-26.5       | 4.75-5.25 / 18-26.5       | 4.75-5.25 / 18-26.5       |
| Dot resistance (Ohm)            | 176 ± 4%                  | 1500 ± 4%                 | 800 ± 3%                  | 1250 ± 3%                 |
| Energy per dot (mJ)             | 0.13                      | 0.25                      | 0.16                      | 0.13                      |
| Stepper motor (Ohm)             | Bipolar (12)              | Bipolar (132)             | Bipolar (12)              | Bipolar (12)              |
| Weight (g)                      | 100                       | 100                       | 100                       | 100                       |
| Life/reliability                | 50km/100M pulses          | 50km/100M pulses          | 50km/100M pulses          | 50km/100M pulses          |
| Operating temperature (C°)      | -10 to 60 non cond.       | -10 to 60 non cond.       | -10 to 60 non cond.       | -10 to 60 non cond.       |
| Operating humidity (%)          | 20 to 85 non cond.        | 20 to 85 non cond.        | 20 to 85 non cond.        | 20 to 85 non cond.        |
| Dimensions (WxDxH mm)           | 82x48x42.5                | 82x48x42.5                | 82x48x42.5                | 82x48x42.5                |

## Features

- 2 inches paper width
- 5 and 24 Volts
- High print speed
- Easy loading paper
- 203 and 300 dpi resolution
- Label / thick paper path design
- Double opto available

## Applications

- Portable printers and terminals
- Label printers
- Cash registers
- Fiscal printers
- Gaming
- Measuring instruments and analyzers
- POS (points of sale)
- EFTs (electronic funds transfer)
- Medical equipments
- Weighing machines, scales
- Ticketing

## Options

## Chip set

