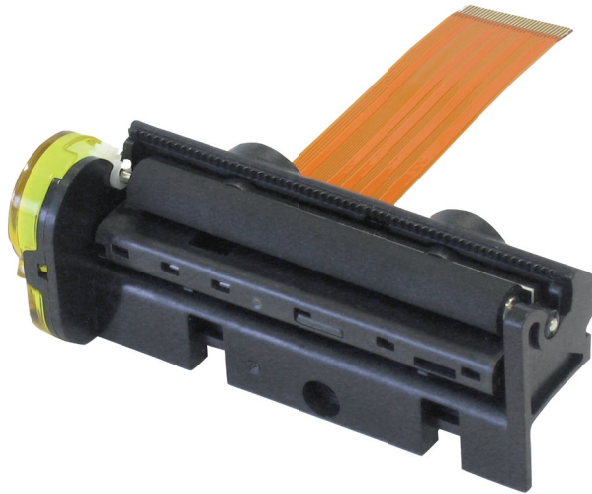
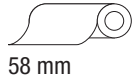


Paper



Features

- World's smallest thermal printer design - 68x24x26 (WxDxH)
- Ultra light (26 grams)
- Easy paper loading and Easy Door Opening System
- Prints from 3V
- 30% power savings
- New printhead technology gives very sharp and clear printout
- One single, small pitch FPC
- Print speed up to 55 mm/s
- Full electrostatic protection
- Max voltage 9.5 Volts HS version
- Low cost version (SS204) especially designed for calculator market

Applications

- Portable printers and terminals
- Hand held terminals
- Measuring instruments and analyzers
- EFTs (electronic funds transfer)
- Data terminal devices
- Taxi meters
- Digital tachometers
- Calculators

Specifications	SS205-LV	SS205-HS	SS204
Print method	Thermal	Thermal	Thermal
Number of dots	384	384	192
Resolution (dots/mm)	8	8	4
Printing width (mm)	48	48	48
Paper width (mm)	58	58	58
Max. paper thickness (μ)	80	80	80
Paper loading	Easy loading	Easy loading	Easy loading
Printing speed (mm/s)	55	75	70
Paper detection	Opto sensor	Opto sensor	Opto sensor (option)
Temperature detection	Thermistor	Thermistor	Thermistor (option)
Head-up or Cover-open detection	Combined with opto sensor	Combined with opto sensor	Combined with opto sensor
Voltage range (Logic/Head)	3-5.25 / 3-6.6	3-5.25 / 5.5-9.5	3-5.25 / 5.0-8.5
Dot resistance (Ohm)	116 ± 10%	165 ± 10%	180 ± 10%
Energy per dot (mJ)	0.12	0.11	0.54
Stepper motor (Ohm)	Bipolar (11)	Bipolar (19)	Bipolar (19)
Weight (g)	26	26	26
Life/reliability	50km/100M pulses	50km/100M pulses	10km/30M pulses
Operating temperature (C°)	0 to 50 non cond.	0 to 50 non cond.	0 to 50 non cond.
Operating humidity (%)	20 to 85 non cond.	20 to 85 non cond.	20 to 85 non cond.
Dimensions (WxDxH mm)	68x24x26	68x24x26	68x24x26

Options

Chip set



CSM05

